

Thermo-processing for computer-to-plate

Generally one can say that for every thermo plate the right system must be chosen. The positive thing of our different kinds of production is the fact that we have alternatives for all eventualities.

Above all this is necessary if a thermo oven is placed before the plate processor and you have to choose another speed because of thermo reasons. We are able to promise you a temperature constant of $1,5 - 2^{\circ} \text{C} \pm$.

This evenness can only be reached because the inner construction is not only made of stainless steel but also of high-quality titanium materials. The developing section also guarantees with its special punge bath in connection with filtration, cooling, developer flow analysis and measurement of the plate-surface an absolutely continuous replenishment and development. Especially for thermo plates a continuous heating and developing process is very important.

Machine type: TSO/TSO High-Speed Thermal-System

This machine is used only the treatment thermal plates with a negative process. It is useful to harden the printing side depending on the type of image. The machine is available for the following operating widths:

650/850/1050/1250/1450/1550/1700 mm

The pre-heat system operates using an aeration processes on both sides, which can be adjusted very accurately. In this way, it is possible to achieve a very uniform heat distribution, down to $\pm 2^\circ\text{C}$. The energy consumption is minimised by a thermoregulation system and a proper insulation. The pre-heating oven is composed by the following parts:

- Inlet table with conveyer belt featuring different lengths.
- Heating section
- Cooling section
- Outlet table with conveyer belt featuring different lengths, starting from 500 mm.
- External control unit with command panel (in this way, the commands can be places both on left or right side, as required).
- Following to the heating time, the consumption is reduced of approximately a 60%.

This type of machine and the module extensions comply with the instruments safety rules (CE-label).

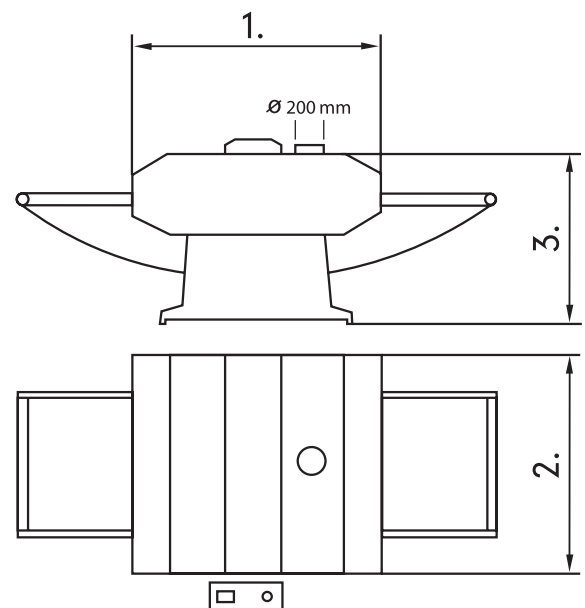
TECHNICAL DATA

Operating widths: 650/850/1050/1250/1450/
1550 and 1700 mm

- Length
Standard: 2000/2000/2000/2000/2200/
2200 and 2200 mm
High-Speed: 2200/2200/2200/2200/2400/
2400 and 2400 mm
- Width: 1300/1500/1700/1900/2100/
2200 and 2300 mm
- Height: 1300 mm

Maximum ventilation rate: 100 cubic meters per hour

Power requirements: 24 kW/400V 3P-N-GN



MODULE EXTENSIONS

- Presetting of the insertion time (optional).

Machine type: TPP/TPP High-Speed Thermal-Plates-Developer

This type of machine can treat thermal plates pre-coated on a single side, and traditional offset plates. The machine is available for the following operating widths: 650/850/1050/1250/1450/ 1550 and 1700 mm

The following items are included in the standard configuration:

- a) Developer (immersion bath) with mechanical operation (brush roller). The developer is continuously cycled and filtered.
- b) Water rinsing station, where the printing plates are rinsed on both sides. (Connectable tubing)
- c) Gumming station, where rubber is evenly applied by means of a napped roller. Also in this case, the liquid addition is via a connectable tubing.
- d) Warm air is dried out at the exit on both sides. (Heating power for each tube 1500 W)
- e) Outlet table, without conveyer belt (optional). Available lengths 1000-1300-1500 mm.
- f) External control unit with command panel (in this way, the commands can be placed both on left or right side, as required).
- g) SPS process control unit, which disables the single stations as the printing plate leaves each station.
- h) Pieces counter.
- i) Automatic cooling of the developer assembly
- j) Developer-heating.
- k) Rinsing program for gumming

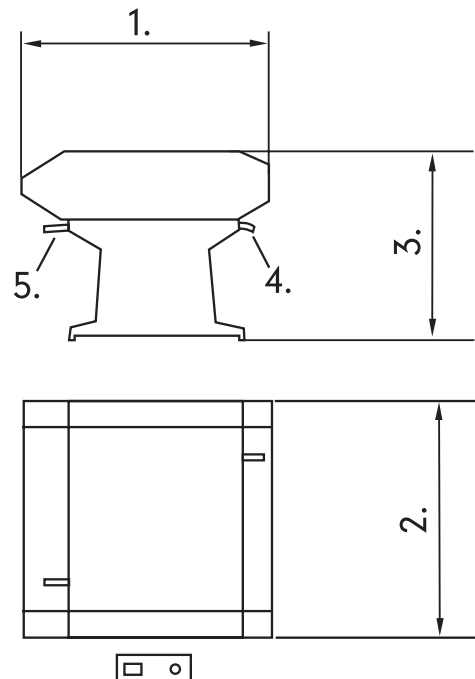
This type of machine and the module extensions comply with the instruments safety rules (CE-label).

TECHNICAL DATA

Operating widths: 650/850/1050/1250/1450/
1550 and 1700 mm

1. Length
Standard: 1500 mm
High-Speed: 1800 mm
2. Width: 1230/1430/1630/1830/2030/2130
and 2230 mm
3. Height: 1050
4. Water fitting G3/4"
5. Draining tube Ø 50

Power requirements: 5 kW/400V 3P-N-GN



MODULE EXTENSIONS

- 1) Inlet table with conveyer belt
- 2) Inlet table with UV protection
- 3) Outlet table with conveyer belt
- 4) Plates stacker with transport trolley (for this version no outlet table required)
- 5) Water saving system

Machine type: EBO/EBO High-Speed Baking oven

This type of machine can treat offset plates pre-coated on one side only. The machine is available for the following operating widths: 650/850/1050/1250/1450/1550 and 1700 mm. The baking with the baking oven extends the duration of the printing plates on the printing machine. A thermal treatment on both sides achieved with air circulation results in evenly baked plates featuring a smooth surface. The temperature is freely adjustable from 0 °C to 300 °C. Energy consumption is minimised by means of a thermoregulation system and a proper insulation. The oven is composed of the following parts:

- a) Inlet table with conveyer belt featuring customised lengths.
- b) Heating area.
- c) Outlet table with conveyer belt featuring customised lengths, starting from 500 mm
- d) External control unit with command panel (in this way, the commands can be placed both on left or right side, as required).
- e) Following to the heating time, consumption is reduced of approximately a 60%.

This type of machine and the module extensions comply with the instruments safety rules (CE-label).

TECHNICAL DATA

Operating widths: 650/850/1050/1250/1450/1550 and 1700 mm

1. Length

Standard: 2000/2000/2000/2000/2200/2200 and 2200 mm

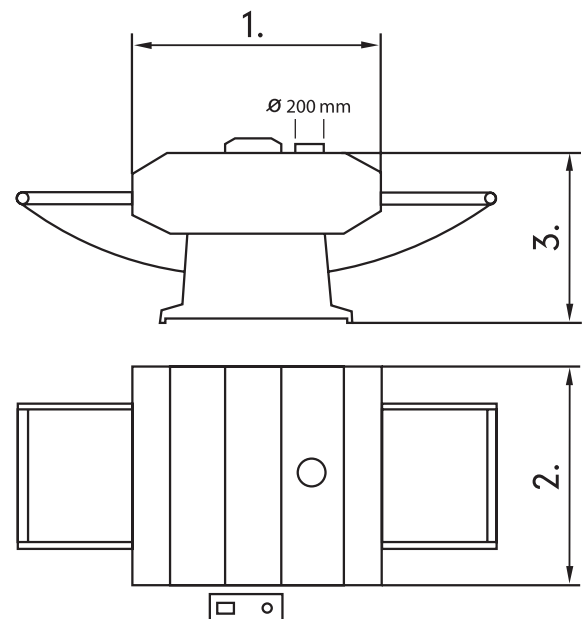
High-Speed: 2200/2200/2200/2200/2400/2400 and 2400 mm

2. Width: 1300/1500/1700/1900/2100/2200 and 2300 mm

3. Height: 1300 mm

Ventilation should be 350 cubic meters per hour.

Power requirements: 24 kW/400V 3P-N-GN



MODULE EXTENSIONS

- Pre-settable operating time (optional)

Machine type: SPG/SPG High-Speed Rinsing type gumming unit

This type of machine can treat offset plates pre-coated on one side only. The machine is available for the following operating widths: 650/850/1050/1250/1450/1550 and 1700 mm. The following items are included in the standard configuration:

- a) 1 rinsing type gumming unit with mechanical operation by means of a round brush with water spraying tubes from the top. All tubing are connectable.
- b) Gumming station, where rubber is evenly applied by means of a napped roller. Also in this case, the liquid addition is via a connectable tubing.
- c) Warm air is dried out at the exit on both sides. (Heating power for each tube 1500 W).
- d) External control unit with command panel (in this way, the commands can be places both on left or right side, as required).
- e) SPS process control unit, which disables the single stations as the printing plate leaves each station.
- f) Rinsing program for gumming.
- g) Pieces counter

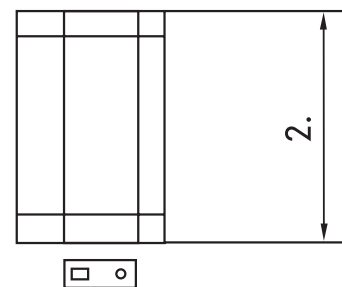
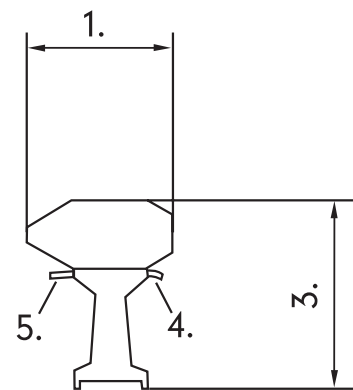
This type of machine and the module extensions comply with the instruments safety rules (CE-label).

TECHNICAL DATA

Operating widths: 650/850/1050/1250/1450/
1550 and 1700 mm

1. Length: 800 mm
2. Width: 1230/1430/1630/1830/2030/2130
and 2230 mm
3. Height: 1050 mm
4. Water fitting G3 / 4"
5. Draining tube Ø 50

Power requirements: 3.7 kW/400V 3P-N-GN



MODULE EXTENSIONS

1. Inlet table with or without conveyer belt
2. Outlet table with or without conveyer belt
3. Plates stacker with transport trolley (for this version no outlet table required)

Machine type: PST/PST High-Speed Plates stacker with transport trolley

This type of machine can stack and transport offset plates. The machine is available for the following operating widths:
650/850/1050/1250/1450/1550 and 1700 mm.
The following items are included in the standard configuration:

- a) A stacking table with conveyer belts (for length, please see technical data). Plates advances up to the stop; a photocell drives the forks insertion, and the printing plate is raised on the transport trolley.
- b) Plates transport trolley with swinging (adjustable) driving rollers.
- c) Control box with command panel.

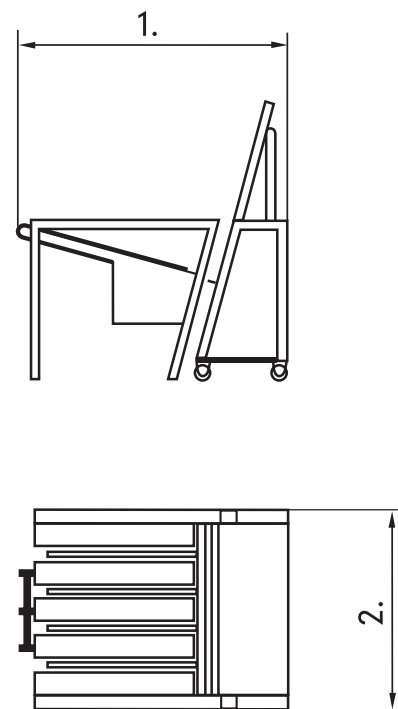
This type of machine and the module extensions comply with the instruments safety rules (CE-label).

TECHNICAL DATA

Operating widths: 650/850/1050/1250/1450/
1550 and 1700 mm

1. Length: 1200/1600/1750/1950/2300/2600
and 2700 mm
2. Width 1105/1305/1505/1705/1905/2005
and 2105 mm

Power requirements 0,3 kW / 230 V N-GN



MODULE EXTENSIONS

Machine type: WSS

Water saving system

The water saving system is a module extension for the correction standardisation unit and the rinsing standardisation unit, on the following types of machine: KGU/SPG/KOR/TPP. With this tanks system, the correction standardisation unit and the rinsing standardisation unit can be used while water saving. The circulating water is added with a small quantity of fresh water during the plate feeding.

The magnetic coupled centrifugal pump drives the water directly in the spraying tubing and to the nozzle on the machine. Water pressure is freely adjustable.

Thanks to filtering and level adjustment, water is prevented from excessive dirt.

This type of machine and the module extensions comply with the instruments safety rules (CE-label).

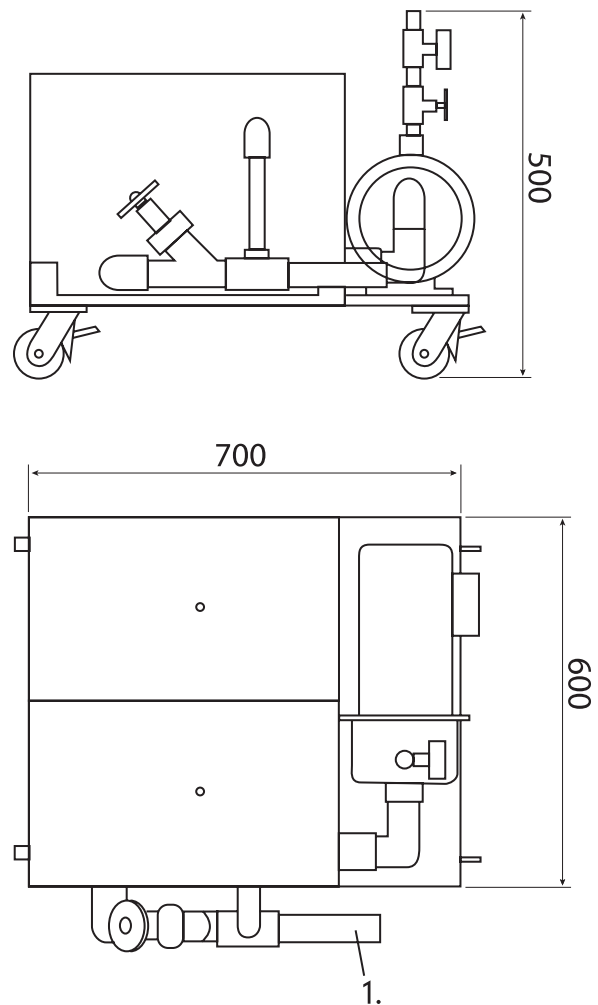
TECHNICAL DATA

Capacity: approximately 50 litres

Pressure adjustment (manometer)

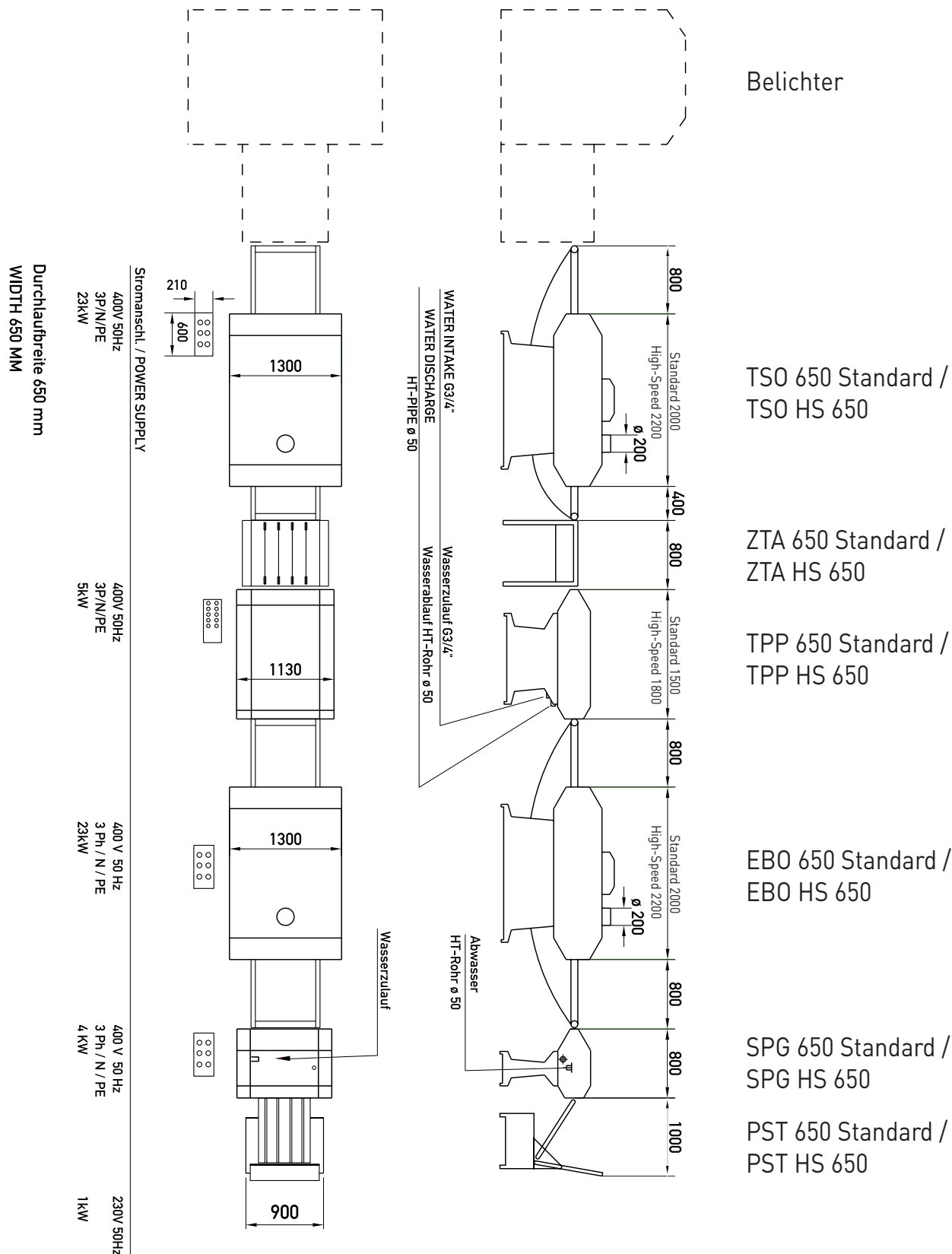
Pumpe 1,1 kW / 230V-N-GN

1. Draining tube Ø 40



MODULE EXTENSIONS

STR 1 407 L



STR 2 263 L

Durchlaufbreite 850 mm
WIDTH 850 MM

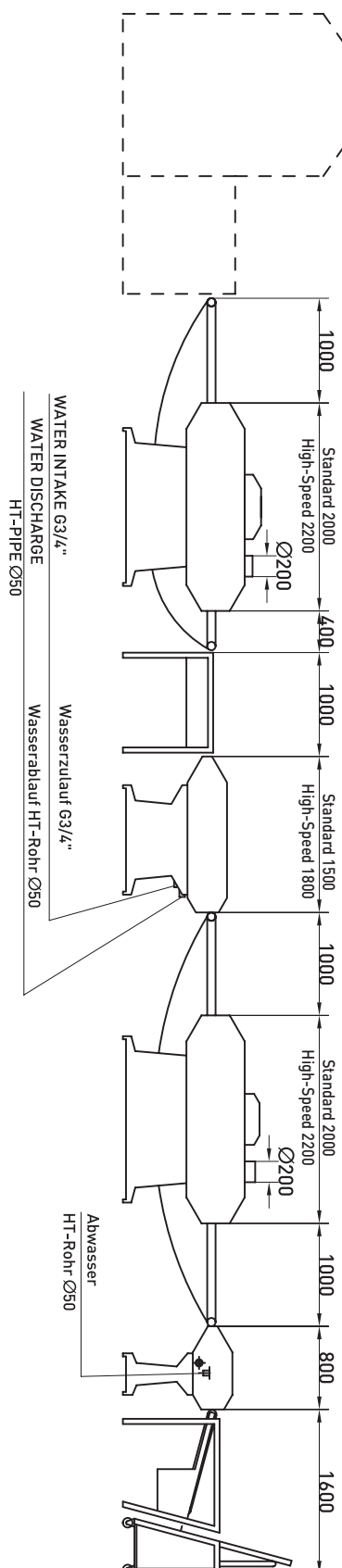
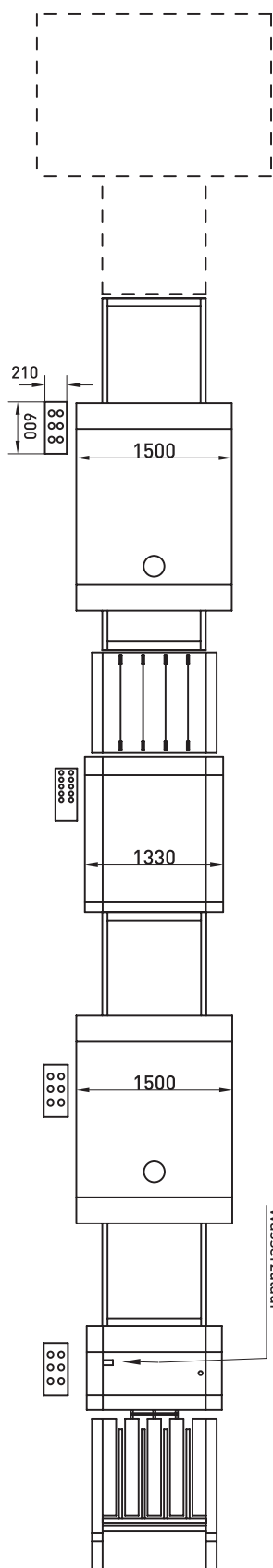
Stromanschl. / POWER SUPPLY
400V 50Hz
3P/N/PE
23kW

400V 50Hz
3P/N/PE
5kW

400 V 50 Hz
3 Ph / N / PE
23kW

400 V 50 Hz
3 Ph / N / PE
4 kW

230V 50Hz
1kW



Belichter

TSO 850 Standard /
TSO HS 850

ZTA 850 Standard /
ZTA HS 850

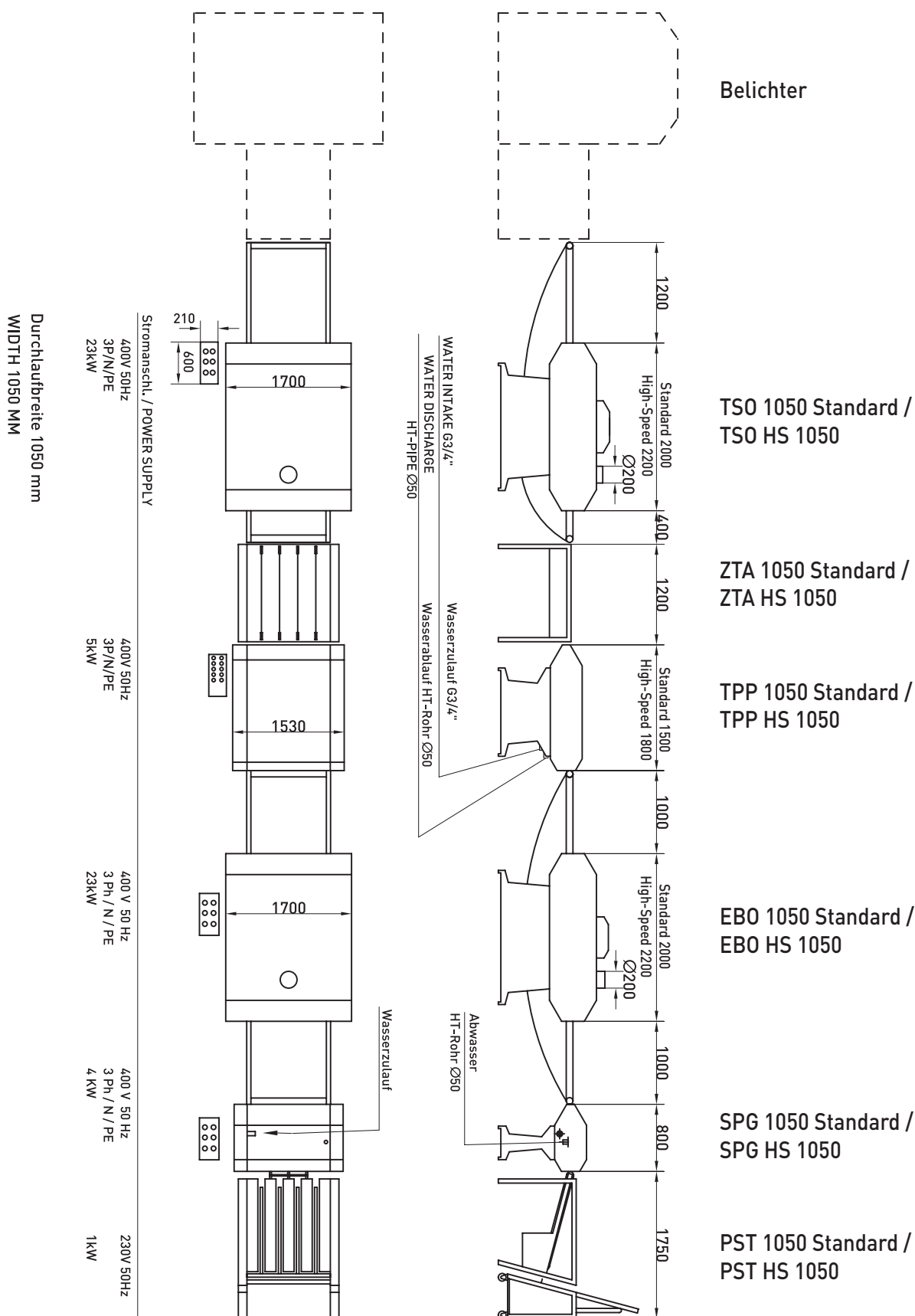
TPP 850 Standard /
TPP HS 850

EBO 850 Standard /
EBO HS 850

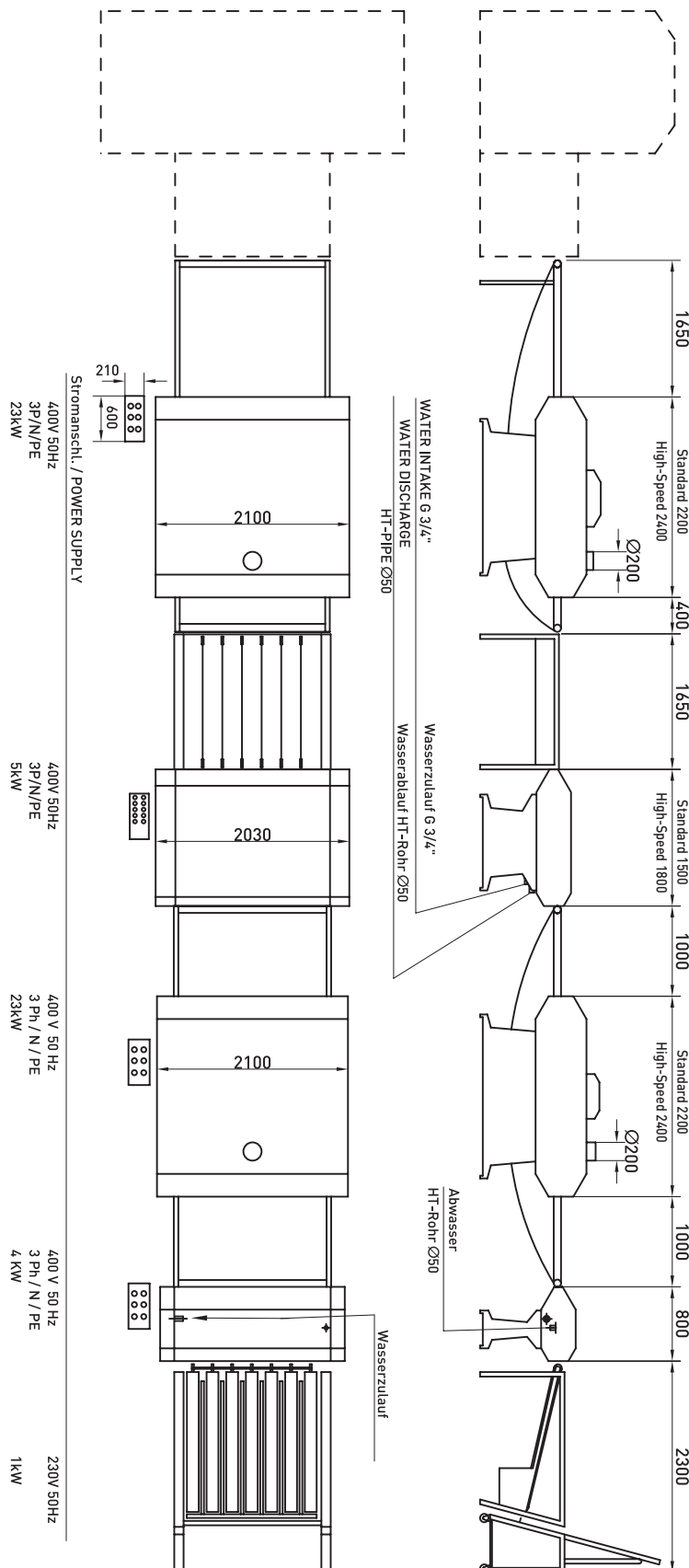
SPG 850 Standard /
SPG HS 850

PST 850 Standard /
PST HS 850

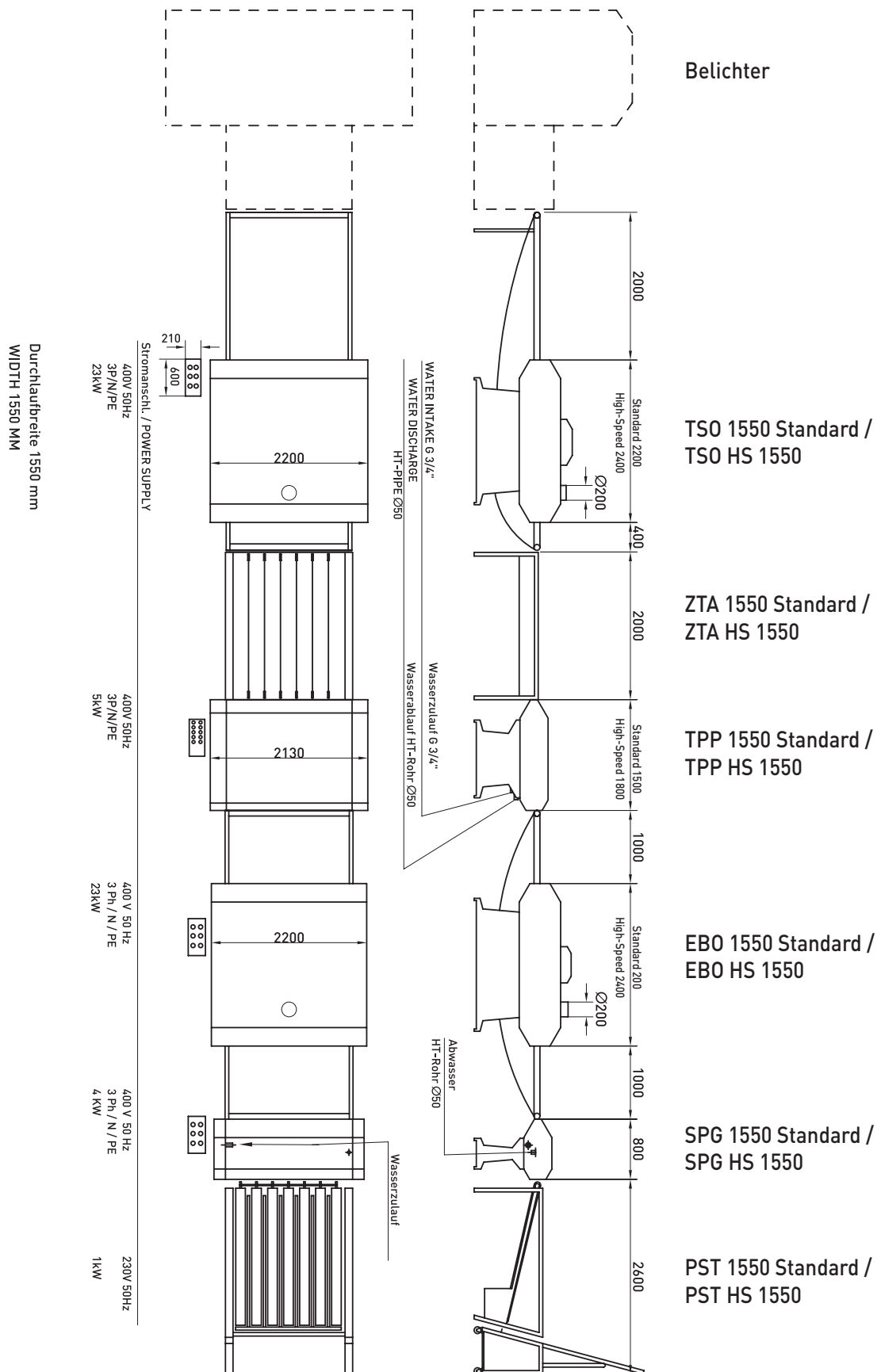
STR 3 316 L



Belichter



STR 9 319 L



STR 6 408 L

